



MONTHLY MEMBERSHIP PROGRESS REPORT

District 325B1

Results as of: 7/31/2015

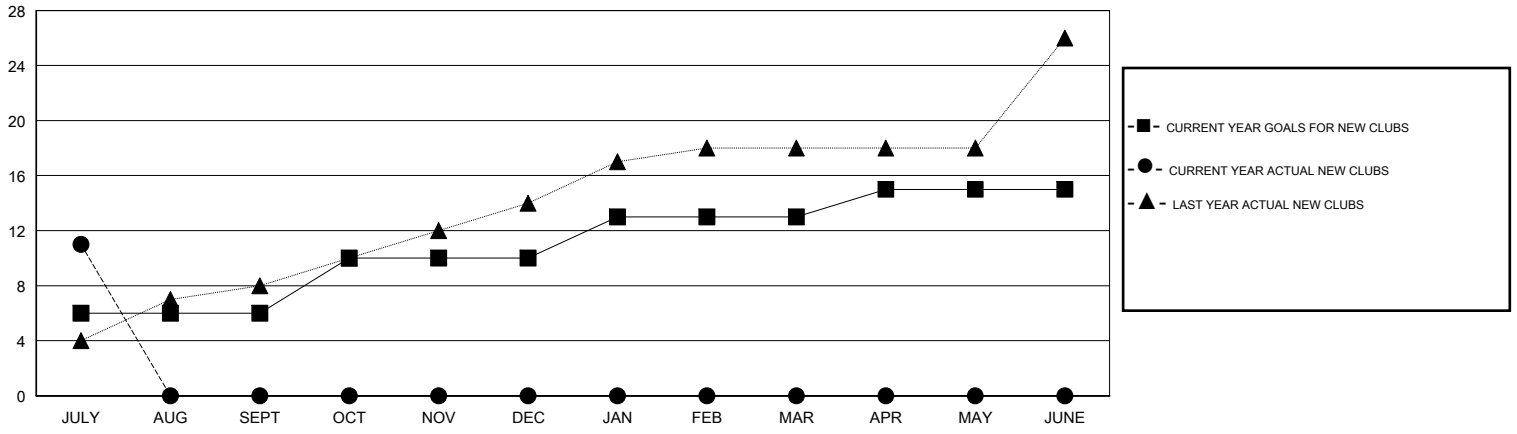
GMT: NAZMUL HAQUE

LOCATION NEPAL

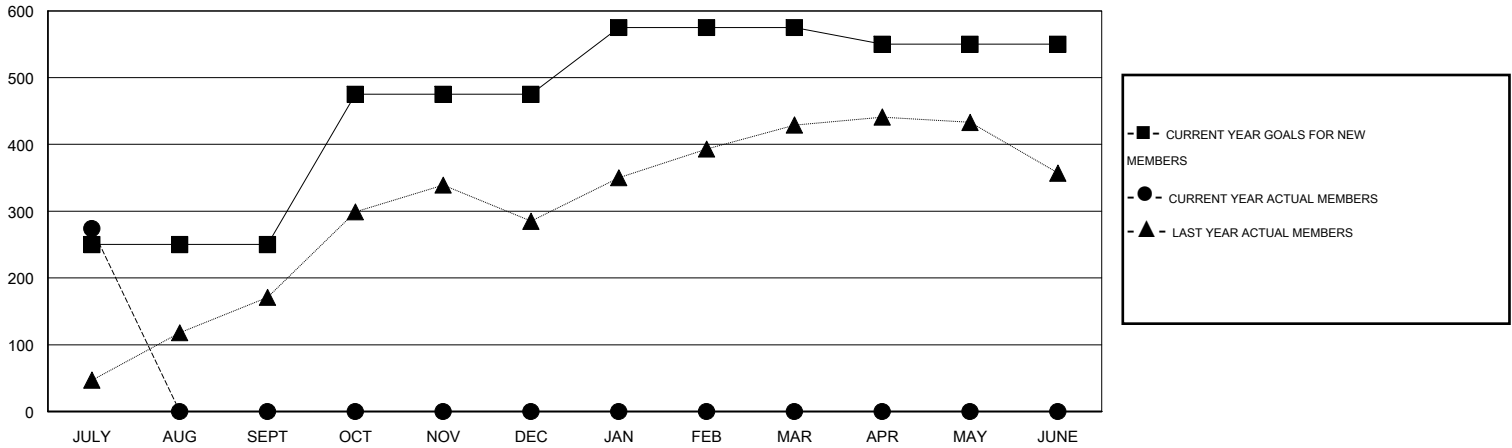
GMT CA 6

Clubs					Members				
RESULTS FOR 2015-2016					RESULTS FOR 2015-2016				
QUARTER	NEW CLUB GOAL	NEW CLUBS	DROPPED CLUBS	NET GAIN/LOSS	QUARTER	NEW MEMBER GOAL	CHARTER AND NEW MEMBERS ADDED	DROPPED MEMBERS	NET GAIN/LOSS
JULY/AUG/SEPT	6	11	0	11	JULY/AUG/SEPT	250	422	148	274
OCT/NOV/DEC	4	0	0	0	OCT/NOV/DEC	225	0	0	0
JAN/FEB/MAR	3	0	0	0	JAN/FEB/MAR	100	0	0	0
APR/MAY/JUNE	2	0	0	0	APR/MAY/JUNE	-25	0	0	0

GOALS AND ACTUAL NEW CLUBS CUMULATIVE



GOALS AND ACTUAL MEMBERS CUMULATIVE



DROPPED CLUBS: 0	46 CLUBS OF 180 ADDED 1 OR MORE NEW MEMBERS	<u>GENDER DISTRIBUTION</u>							
<u>DROPPED MEMBERS</u>		MALE	4,187 (81.68%)						
DECEASED	0	FEMALE	939 (18.32%)						
CLUB CANCELLED	0	<table border="1"> <tr> <td>FAMILY UNIT MEMBERS</td> <td>2,779</td> </tr> <tr> <td>HEAD OF HOUSEHOLD</td> <td>1,019</td> </tr> <tr> <td>NON-HEAD OF HOUSEHOLD</td> <td>1,760</td> </tr> </table>		FAMILY UNIT MEMBERS	2,779	HEAD OF HOUSEHOLD	1,019	NON-HEAD OF HOUSEHOLD	1,760
FAMILY UNIT MEMBERS	2,779								
HEAD OF HOUSEHOLD	1,019								
NON-HEAD OF HOUSEHOLD	1,760								
OTHER	148	CLICK HERE FOR HEALTH ASSESSMENT DATA							
TOTAL	148								